

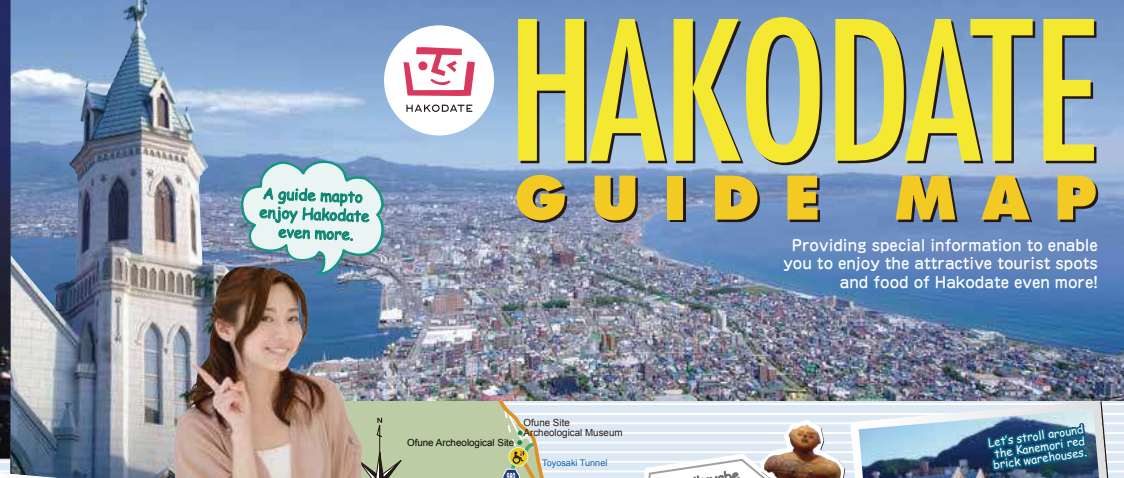
List of places in the Hakodate area that appeared in the second revised version of the Michelin Green Guide Japan

Hakodate		★	Tachikawa Family Residence	15-15, Benten-cho, Hakodate		Russian Orthodox Church	3-13, Motomachi, Hakodate	★
Goryokaku Park	Goryokaku-cho, Hakodate	★★	Hakodate City Museum of Northern Peoples	21-7, Sushiro-cho, Hakodate	★	Motomachi Catholic Church	15-30, Motomachi, Hakodate	
View (Goryokaku Park)	43-9, Goryokaku-cho, Hakodate	★★★	Motoi-zaka Slope		★	Interior (Motomachi Catholic Church)	15-30, Motomachi, Hakodate	★
Hakodate Museum of Art	37-6, Goryokaku-cho, Hakodate	—	Souma Company Building	9-1, Ohmachi, Hakodate	★	Higashi Honganji Temple Hakodate Branch (Shinsyu Otani-ha Hakodate Branch)	16-15, Motomachi, Hakodate	★
Stroll around the port of Hakodate		★	Old British Consulate	33-14, Motomachi, Hakodate		Mt. Hakodate		★★★
Storehouse of the Hakodate Takayaya Kahei Museum	13-22, Sushiro-cho, Hakodate	★	Old Branch Office of the Hokkaido Government	12-18, Motomachi, Hakodate		View (Mt. Hakodate)		★★★★
Motomachi Slope		★★★	Old Public Hall of Hakodate Ward	11-13, Motomachi, Hakodate	★★	Yunokawa Spa	Yunokawa-cho, Hakodate	
Foreigners' Cemetery	23, Funami-cho, Hakodate	★	Excellent view (Old Public Hall of Hakodate Ward)	11-13, Motomachi, Hakodate	★★★	Miharashi Park	56, Miharashi-cho, Hakodate	★
(Column) Japan-US Treaty of Peace and Amity and signature at the end of the Edo period	Inserted as a column		[Column] Jomon culture	Inserted as a column		Trappistine Convent	346, Kamiyukawa-cho, Hakodate	
Koryuji Temple	21-11, Funami-cho, Hakodate	★	Hachiman-zaka Slope					
Jitsugyoji Temple	18-18, Funami-cho, Hakodate	—	Churches around Daisen-zaka Slope		★			

Many places in the Hakodate area appeared in the second revised version of the Michelin Green Guide Japon in May 2011.



HAKODATE GUIDE MAP



A guide map to enjoy Hakodate even more.

Providing special information to enable you to enjoy the attractive tourist spots and food of Hakodate even more!

Streetcar/bus information

Streetcar/Hakodate Bus fares

Streetcar	¥210 - ¥250
Hakodate Bus	¥210 - ¥250
Teisan Bus	¥210 - ¥250
Ahiyama Kanko Bus	¥210 - ¥250

One-day ticket
 Streetcar: ¥600 (adults) ¥300 (children)
 Hakodate Bus: ¥600 (adults) ¥300 (children)
 Teisan Bus: ¥600 (adults) ¥300 (children)
 Ahiyama Kanko Bus: ¥600 (adults) ¥300 (children)

Time required to walk from the streetcar stop: 00 min. Time required to walk from the bus stop: 00 min. Traveling time: 00 min.

With lots of historic buildings, Hakodate is an excellent area for a stroll!

Hurry! There's so much to see!

Minamikayabe area, where a rare hollow clay figure was found!

Let's stroll around the Kanemori red brick warehouses!

Let's take a break, go next?

Filleting a whole tuna - a Toi specialty!

Former Toi Line concrete arch bridge!

Hot-spring course
 Yunokawa Streetcar stop, Cape Shirokubi, Cape Esan, Esan Highlands, Mt. Esan, Cape Esan Lighthouse Park, Cape Shishibana.

History quest course
 Old site of Shinoidate, Mt. Esan, Cape Esan Lighthouse Park, Cape Shishibana.

Fine scenery course
 Cape Shirokubi, Itoi-no-oka Park, Mt. Esan, Cape Esan Lighthouse Park, Cape Shishibana.

Transportation from Hakodate Station to major tourist spots

Destination	Transportation	Line	Where to get off
Cape Tachimachi	Streetcar	B	15-min. walk from Yachigashira
Hekkettsu Monument	Streetcar	B	15-min. walk from Yachigashira
Hakodate Park	Streetcar	B	3-min. walk from Ayayagi-cho
Motomachi Park	Streetcar	B	8-min. walk from Sushiro-cho
Old Public Hall of Hakodate Ward	Streetcar	A	4-min. walk from Kokado-mae
Churches in Motomachi	Streetcar	A	10-min. walk from Sushiro-cho
Chinese Memorial Hall	Streetcar	B	5-min. walk from Motomachi
Cemetery for foreigners	Streetcar	A	7-min. walk from Sushiro-cho
Old Russian Consulate	Streetcar	B	3-min. walk from Kokado-mae
Mt. Hakodate Ropeway Base Station	Streetcar	A	15-min. walk from Omachi
Yunokawa Spa Resort	Streetcar	B	10-min. walk from Jujigai
Goryokaku Park/Hakodate Magistrate's Office	Streetcar	B	3-min. walk from Jujigai
Trappistine Convent	Streetcar	B	2-10-min. walk from Yunokawa-onsen

INFORMATION

Area code: 0138

Tourist Information Center ☎23-5440
 Motomachi Tourist Information Center ☎27-3333
 Hakodate International Tourism and Convention Association ☎27-3535
 Tourism Department, City of Hakodate ☎21-3323
 Toi District Office, City of Hakodate ☎82-2111
 Esan District Office, City of Hakodate ☎85-2331
 Todohokke District Office, City of Hakodate ☎86-2111

Minamikayabe District Office, City of Hakodate ☎25-5111
 City Tram Department (streetcar) ☎32-1730
 Hakodate Bus Co., Ltd. ☎51-3137
 Hakodate Hotel Cooperative Association ☎22-2942
 Yunokawa Onsen Hotel Cooperative Association ☎57-8988
 JR Hokkaido ☎33-3085
 South Hokkaido Railway ☎63-1977

City-circle and local buses
 Hakodate City Bus ☎51-5137
 Hakodate Kanko Bus ☎51-5137
 Hakodate Kanko Bus ☎51-5137
 Hakodate Kanko Bus ☎51-5137
 Hakodate Kanko Bus ☎51-5137

Taxi companies
 Taxi Kikyo ☎47-1400
 Tokai Hire ☎47-1410
 Center Hire ☎57-1221
 Kotobuki Daiichi Kotsu ☎55-2525
 Shinsei Hire ☎27-3300
 Hokkai Kogata Taxi ☎22-3838
 Isarubi Hire ☎57-9933
 Hakodate Ocean Taxi ☎40-7700
 Shinwa Kotsu ☎24-9558
 Hokuto Hire ☎25-2335
 Karamatsu Hire ☎26-1010
 Hokkaido-Hokkaido maximo Taxi ☎22-4556
 Misaki Daiichi Kotsu ☎55-2525
 Suzuran Taxi ☎36-1717
 Minamikayabe Hire ☎25-3539
 Hakodate Airport Branch ☎54-4114
 Kota Taxi (privately owned) ☎090-3274-6336

Car rental companies
 Nihon Rent-A-Car ☎23-1333
 Hakodate Ekimae Branch ☎23-1333
 Hakodate Airport Branch ☎59-3900
 Honda Rent-A-Lease Hakodate ☎57-2525
 Hakodate Station Mobile Office ☎51-2111
 Hakodate Airport Branch ☎59-2121
 Isarubi Hire ☎54-2121
 OTS Rent-A-Car ☎36-1122
 Hakodate Branch ☎36-1122
 Low-price Rent-A-Car Shareeta ☎080-400-4898
 Shareeta Rent-A-Car ☎0120-836-215
 Shareeta Rent-A-Car ☎0120-836-215
 Hi Kaitaku Rent-A-Car ☎22-7864
 Orix Rent-A-Car ☎59-1900
 Minamikayabe Branch ☎59-1900
 Hakodate Ekimae Branch ☎23-0543
 Tsugay Kallyo Ferry Hakodate Terminal Course ☎36-4550

Budget Rent-A-Car
 Hakodate Airport Branch ☎36-2255
 Hakodate Ekimae Branch ☎24-2277

Cruser
 Blue Moon ☎26-5161

Taxi companies
 Hakodate Branch ☎51-0100
 Hakodate Ekimae Branch ☎51-0100
 Hakodate Airport Branch ☎51-0100
 Nippon Rent-A-Car ☎48-8171
 Sogo Kotsu ☎45-6000
 Hakodate Kotsu ☎51-4700

Bus information

Bound for the Toi, Esan, Todohokke and Minamikayabe areas

Hakodate Eki-mae Goryokaku Yukura Jirija-mae Trappistine riguchi Kakkumi onsen Minamikayabe station Shikobe-cho

Shikobei toda Hinomaru danchi Tobokoshi shio-mae Esan tozan-guchi

Buses bound for the Toi, Esan, Todohokke and Minamikayabe areas leave from Platform 6

Hot-spring course
 Yunokawa Streetcar stop, Cape Shirokubi, Cape Esan, Esan Highlands, Mt. Esan, Cape Esan Lighthouse Park, Cape Shishibana.

History quest course
 Old site of Shinoidate, Mt. Esan, Cape Esan Lighthouse Park, Cape Shishibana.

Fine scenery course
 Cape Shirokubi, Itoi-no-oka Park, Mt. Esan, Cape Esan Lighthouse Park, Cape Shishibana.

Driving courses
 Fureai Yu-yukan, Esan Citizens' Center, Tadopokkuru, Minamikayabe Hot Spring, Minamikayabe & Kotoke Center, Oline Site Archeological Museum.

Hakodate local mascot "Exokun"



Hakodate Bus
(from Hakodate Sta. to the Trappistine Convent)
Goryokaku Tower-Trappistine Shuttle Bus

Line 99
15-min. walk from Yunokawa-danchi Kita-guchi
Line 10 99 Kakkumi
8-min. walk from Trappistine iguchi



Walk around to find your favorite spot.

